



## CONTACT

**Steven Frei**

208.339.1052

steve@idahobp.com

**Brent Butikofer**

208.589.1222

brent@idahobp.com

Office: 208.881.9694

www.idahobp.com

## THE PROPERTY:

Prime professional medical office space conveniently located immediately off Sunnyside road in the heart of Idaho Falls medical community. Turn key medical office consisting of 2,542 SF located within Creekside Plaza. The space contains 7 exams rooms, a nurses' station, reception/waiting area, 1 private restroom and 2 common area restrooms. Tenant signage available on existing monument sign. Convenient patient drop-off under covered breezeway. Ample patient parking provided by onsite parking lot.





## Property Features:

- Medical buildout
- Convenient to both regional hospitals
- Reception area and waiting room
- 7 exam rooms
- 2 common area restrooms
- 1 private restroom
- Nurses' station/lab
- Covered breezeway patient drop-off area



## Property Information:

**Property Type:** Professional office space

**Suite Number:** J

**Suite Size:** 2,542 SF

**Building Size:** 25,878 SF

**Lease:** 3-5 yr. NNN

**Other:** Ample parking on site

## CONTACT

**Steven Frei** - 208.339.1052  
steve@idahobp.com

**Brent Butikofer** - 208.589.1222  
brent@idahobp.com

Office: 208.881.9694  
www.idahobp.com

## CONTACT

**Steven Frei**

208.339.1052

steve@idahobp.com

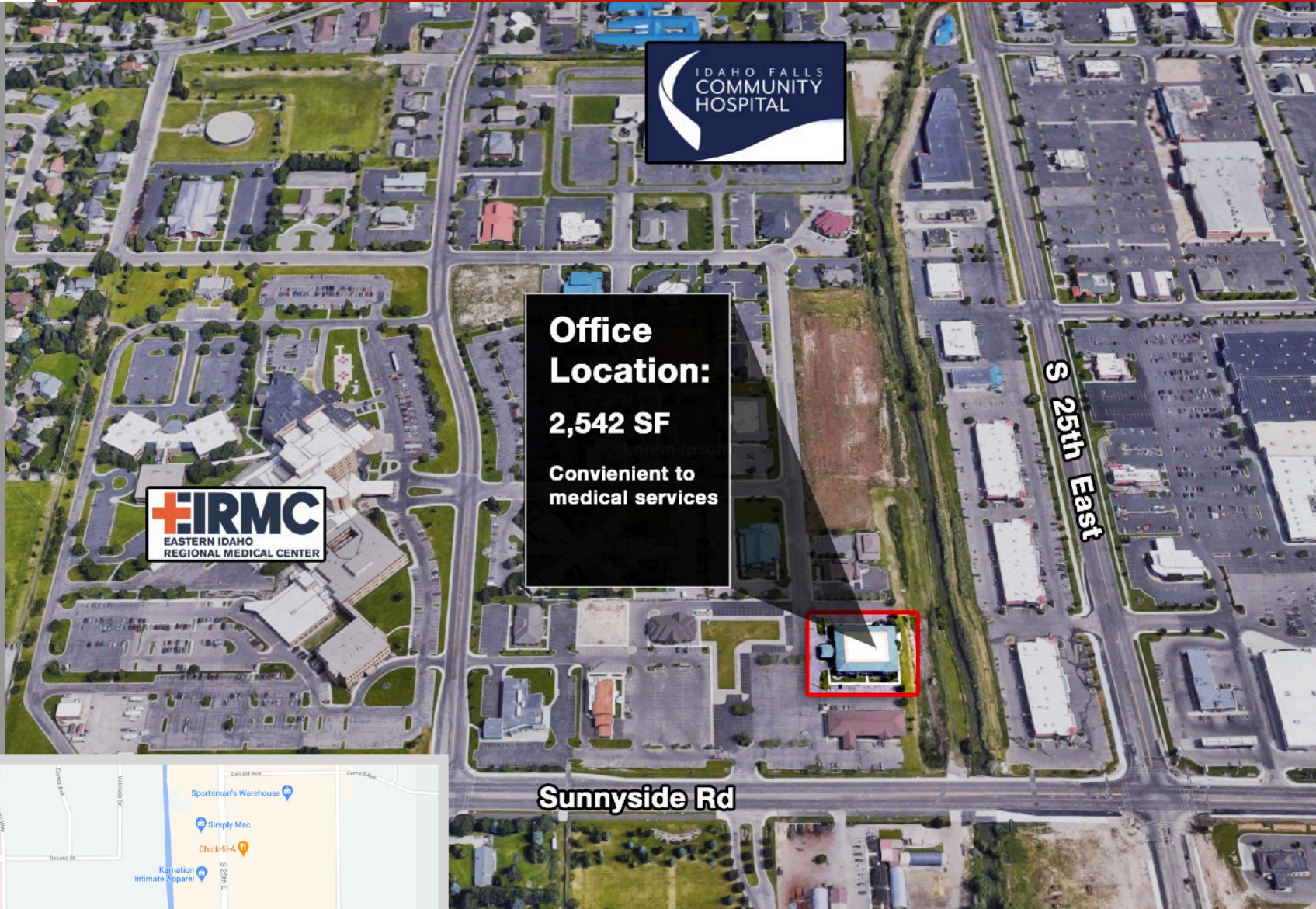
**Brent Butikofer**

208.589.1222

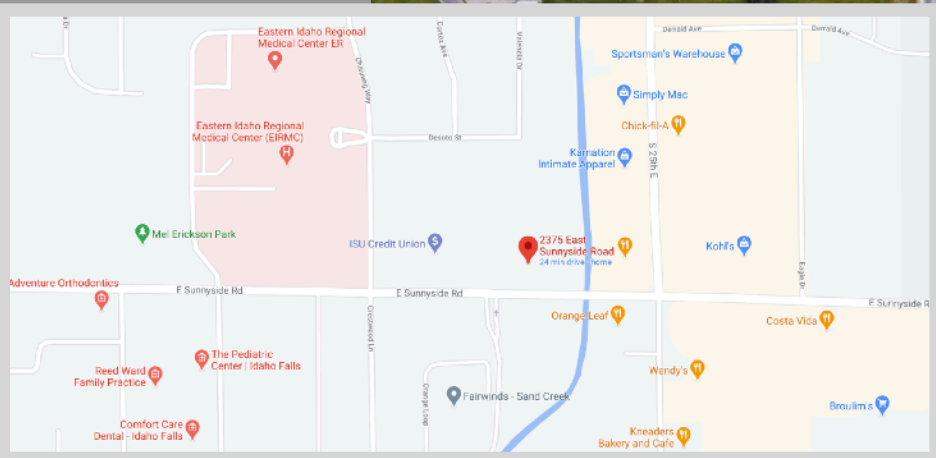
brent@idahobp.com

Office: 208.881.9694

www.idahobp.com



**Office Location:  
2,542 SF**  
Convenient to  
medical services



## LOCATION :

Convenient to Eastern Idaho Regional Medical Center and Idaho Falls Community Hospital. Also near food and retail services.



## CONTACT

**Steven Frei** - 208.339.1052  
steve@idahobp.com

**Brent Butikofer** - 208.589.1222  
brent@idahobp.com

Office: 208.881.9694  
www.idahobp.com

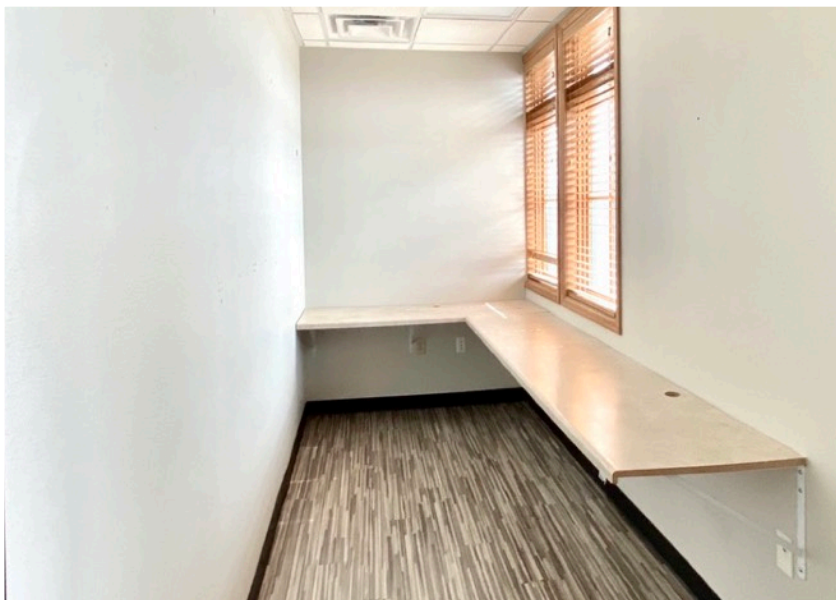


## CONTACT

**Steven Frei**  
208.339.1052  
steve@idahobp.com

**Brent Butikofer**  
208.589.1222  
brent@idahobp.com

Office: 208.881.9694  
www.idahobp.com



## CONTACT

**Steven Frei**  
208.339.1052  
steve@idahobp.com

**Brent Butikofer**  
208.589.1222  
brent@idahobp.com

Office: 208.881.9694  
www.idahobp.com



**Available  
2,542 SF**



**2nd FLOOR ESCAPE ROUTES**

## CONTACT

**Steven Frei**  
208.339.1052  
steve@idahobp.com

**Brent Butikofer**  
208.589.1222  
brent@idahobp.com

Office: 208.881.9694  
www.idahobp.com