

S. Woodruff Ave

683 S. Woodruff
Total Building: Approx. 10,400 SF

CONTACT

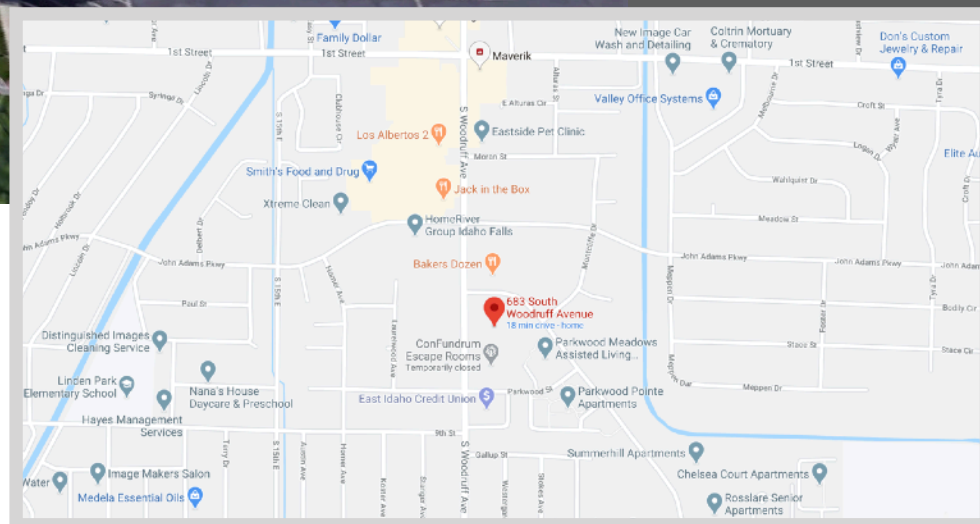
Steven Frei
208.339.1052
steve@idahobp.com

Brent Butikofer
208.589.1222
brent@idahobp.com

Office: 208.881.9694
Fax: 208.346.8755
www.idahobp.com

THE

Local multi-tenant professional office investment opportunity, conveniently located off Woodruff avenue. Monument sign for tenant representation. Lot is cross accessed and cross parked for convenience.





Property Information:

- Multi-tenant professional office
- Total building approx. 10,400 SF
- 6 Suites fully leased
- Ample on-site parking
- Triple net lease structure
- Monument sign
- Convenient access immediately off Woodruff
- Located in main professional office corridor in Idaho Falls market



CONTACT

Steven Frei

208.339.1052

steve@idahobp.com

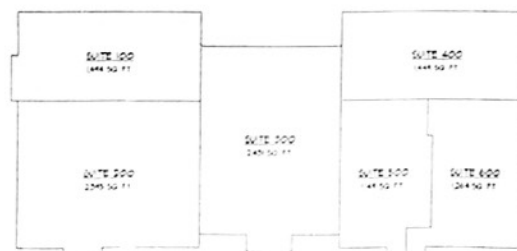
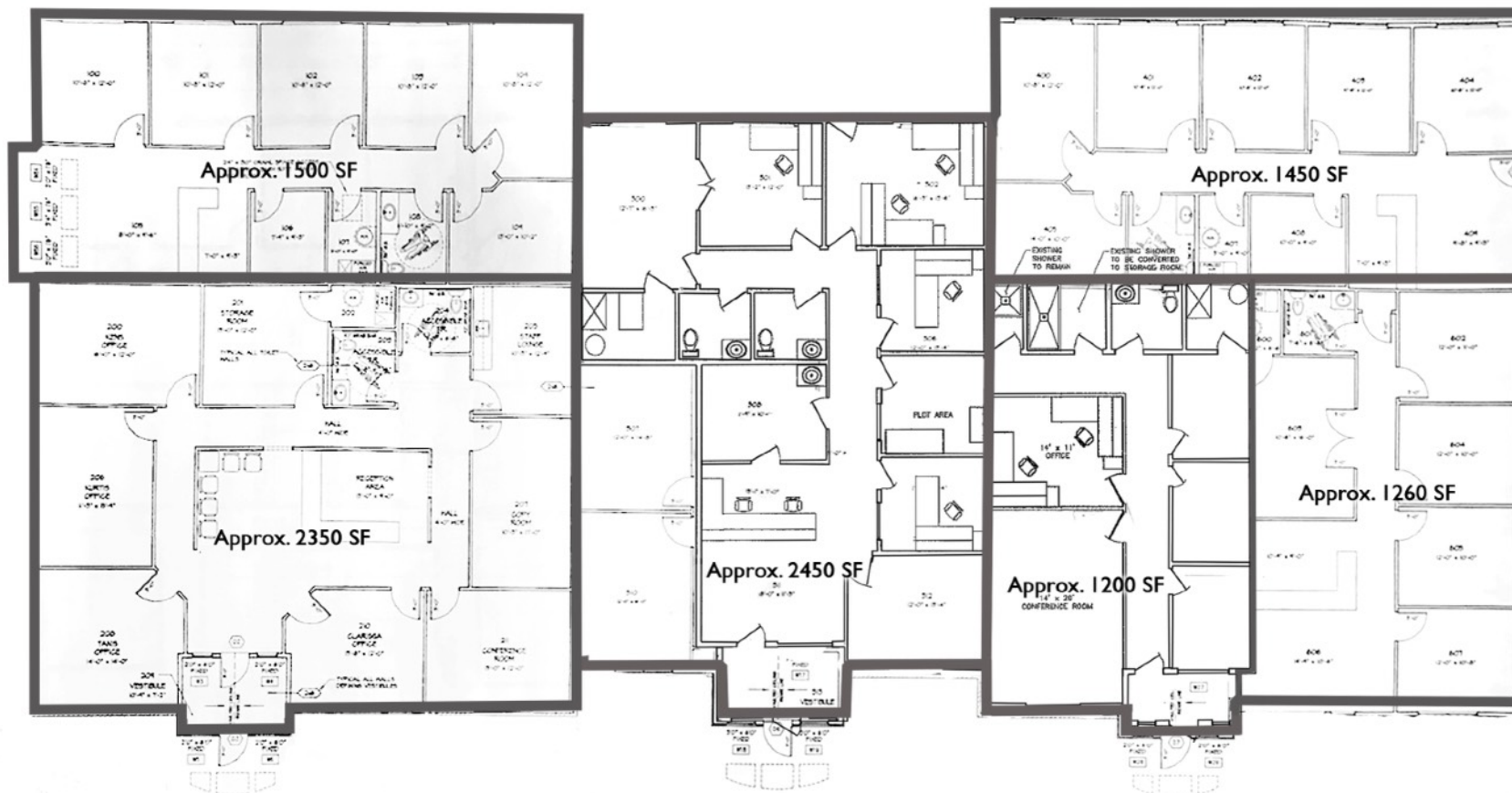
Brent Butikofer

208.589.1222

brent@idahobp.com

Office: 208.881.9694

www.idahobp.com



KEY PLAN
SCALE: NO SCALE

MAIN LEVEL FLOOR PLAN

22' x 34' DRAWING SCALE: 3/8" = 1'-0"
1" = 11' DRAWING SCALE: 3/32" = 1'-0"
TOTAL GROSS FLOOR AREA OFFICE AREA: 10,082 SQ. FT.



CONTACT

Steven Frei - 208.339.1052
steve@idahobp.com

Brent Butikofer - 208.589.1222
brent@idahobp.com

Office: 208.881.9694
Fax: 208.346.8755
www.idahobp.com