



## Property Information:

**Property Type:** Office

**Building Size:** 900 SF

**Building Class:** Class B

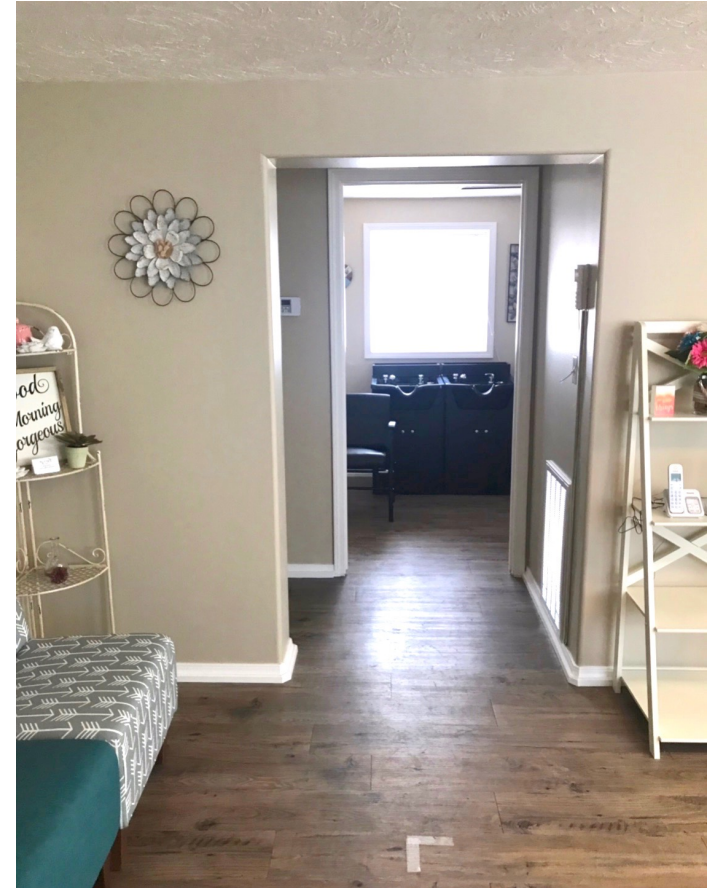
**Lot Size:** 0.12 Acres

## Property Features:

- Stand alone professional office
- Centrally located in downtown Idaho Falls just off Northgate Mile
- Newly renovated with CAT 6 networking, and new HVAC system
- 2 Hard walled offices
- ADA bathroom
- Sprinkled landscaping









## Traffic:

COLLECTION STREET	CROSS STREET	TRAFFIC VOL	YEAR	DISTANCE
N Holmes Ave	Whittier St	12,552	2017	0.17 mi
E Elva St	Northgate Mile	2,000	2017	0.17 mi
N Holmes Ave	Paulson St	10,605	2017	0.22 mi
E Elva St	N Holmes Ave	2,700	2017	0.24 mi
Northgate Mile	Payne St	17,397	2017	0.27 mi