



## CONTACT

**Steven Frei**

208.339.1052

steve@idahobp.com

**Brent Butikofer**

208.589.1222

brent@idahobp.com

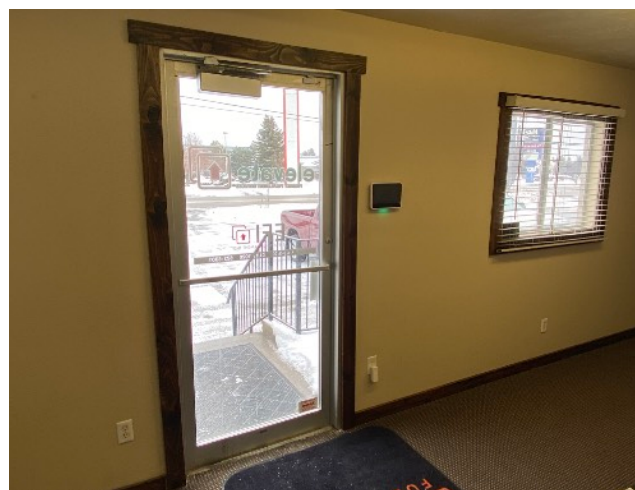
Office: 208.881.9694

www.idahobp.com

## THE PROPERTY:

Commercial warehouse/distribution strategically located near the intersection of I-15 and Highway 20. Building includes an air conditioned office portion with reception area, conference room and separate hard walled offices. The warehouse portion features 3 internal dock high doors, 20' ceilings, 3 restrooms and mezzanine storage.





## Property Information:

**Property Type:** Commercial Industrial Warehouse

**Total Building Size:** Approx. 25,761 SF

**Office Size:** Approx 1,450 SF

**Mezzanine:** Approx 3,309 SF

**Lot Size:** Approx .735 AC

## Property Features:

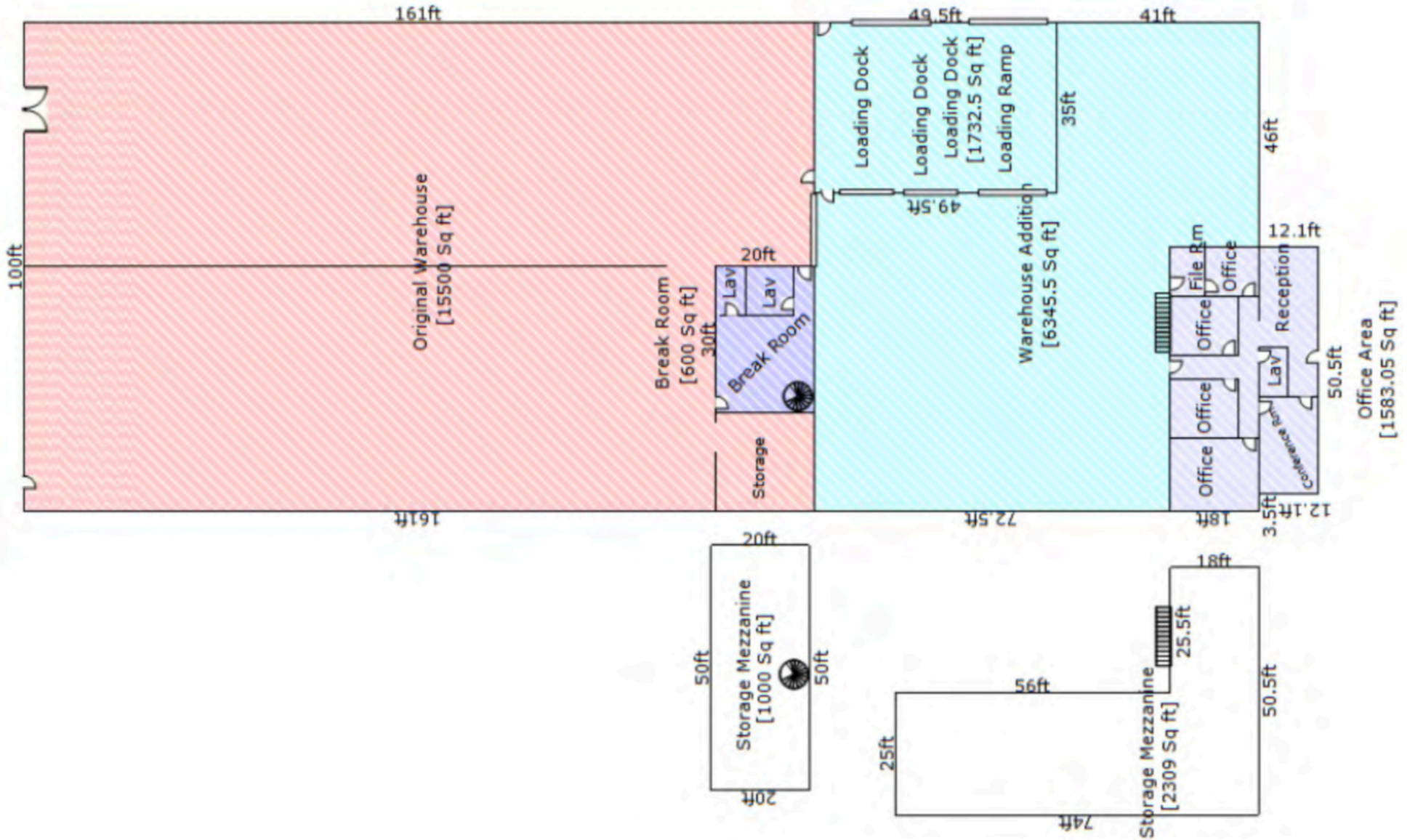
- Located near I-15 and Highway 20 intersection
- 4 hard walled offices
- Reception area
- Conference room
- Employee break room
- 3 restrooms
- 3 internal dock high doors
- Interior clear height 16'
- Upgraded insulation and lighting
- Food grade
- Fire suppression

## CONTACT

**Steven Frei** - 208.339.1052  
steve@idahobp.com

**Brent Butikofer** - 208.589.1222  
brent@idahobp.com

Office: 208.881.9694  
www.idahobp.com

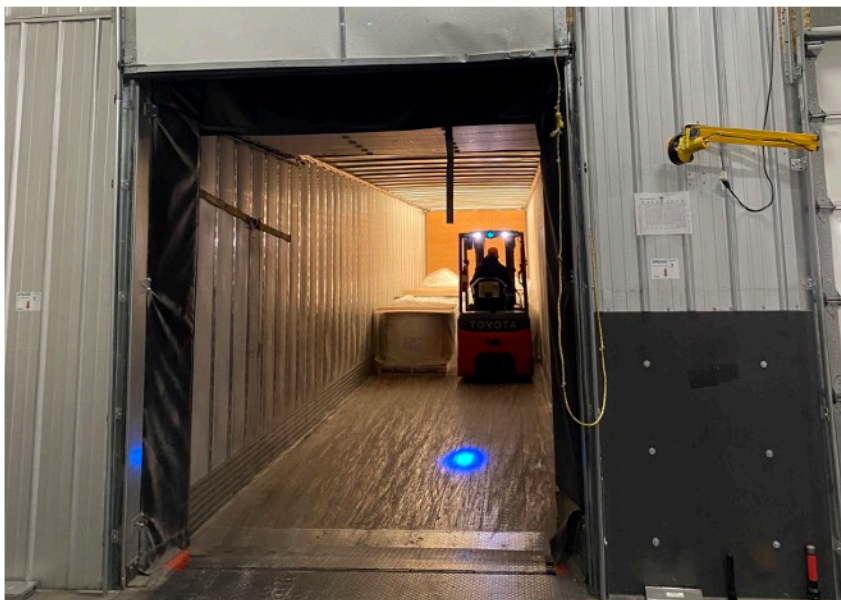


## CONTACT

**Steven Frei** - 208.339.1052  
steve@idahobp.com

**Brent Butikofer** - 208.589.1222  
brent@idahobp.com

Office: 208.881.9694  
www.idahobp.com



## CONTACT

**Steven Frei**  
208.339.1052  
steve@idahobp.com

**Brent Butikofer**  
208.589.1222  
brent@idahobp.com

Office: 208.881.9694  
www.idahobp.com



## CONTACT

**Steven Frei**  
208.339.1052  
steve@idahobp.com

**Brent Butikofer**  
208.589.1222  
brent@idahobp.com

Office: 208.881.9694  
www.idahobp.com



## CONTACT

**Steven Frei** - 208.339.1052  
steve@idahobp.com

**Brent Butikofer** - 208.589.1222  
brent@idahobp.com

Office: 208.881.9694  
www.idahobp.com



## CONTACT

**Steven Frei** - 208.339.1052  
steve@idahobp.com

**Brent Butikofer** - 208.589.1222  
brent@idahobp.com

Office: 208.881.9694  
www.idahobp.com